

iSimple® WiFi™



**PRO DIGITAL FM TRANSMITTER
FOR YOUR iPhone or iPod**

MAKE THE CONNECTION ►

to your
iPhone
to your
iPod



Wi-Fi APP DOWNLOAD
For iPod touch and iPhone

Table of Contents

	Pages
1. Introduction	1
Compatibility	
2. Important Safety Notes	1
3. Contents	1
4. Installation	2
A. WiFli™ Remote & Mounting Cradle	2
B. WiFli™ Car Charger	3
C. WiFli™ App (for iPhone & iPod touch only)	3
5. Operation	3
A. Operating from device	3
1. iPhone / iPod touch	3
2. iPod Models Featuring Click Wheel	4
B. Operating from the WiFli™ Remote	5
1. Basic Mode (non-RDS radios)	5
2. Advance Mode (RDS radios only)	5
6. Troubleshooting	6
7. Warranty & Legal Info	7

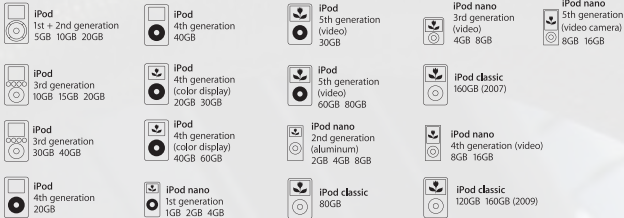
1. Introduction

Congratulation on your purchase of an iSimple® WiFi™. The WiFi™ is an innovative wireless docking accessory for the iPod or iPhone that is designed to deliver endless hours of listening pleasure through any car or home FM radio. To make the most of the innovative features the WiFi™ offers, please ensure that you read this entire manual.

Compatibility:

The iSimple WiFi™ is compatible with the following Apple iPod and iPhone models:

Standard iPod models (requires download of WiFi playlist(P.E.T.S.) see page 4 for details).



The following devices require a special WiFi™ app from the iTunes App store prior to use (free download):



2. Important Safety Notes *Please Read First*

Be sure you read and understand the following prior to operating the WiFi™:

- The driver should never manually operate an iPod or iPhone unless the vehicle has come to a complete stop.
- Although the WiFi™ is designed to make iPod or iPhone operation safer, the driver should only look at the device or radio briefly while driving.
- Do not attempt to download or use the WiFi™ App (iPhone and iPod touch owners only) while driving.
- Drivers are responsible for complying with all state and local traffic laws regarding the use of personal electronics while behind the wheel.
- iSimple claims no responsibility for damages, injuries or law violations caused in whole or part by misuse of the WiFi™ or any attached device.

3. Contents

The WiFi™ comes with the following items:

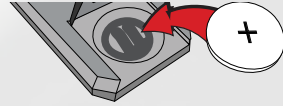
- The WiFi™ Node (x1)
- Mounting Cradle (x1)
- Battery CR2025 (x1)
- Alcohol prep. pad (x1)
- WiFi™ Remote (x1)
- Car Charger (1000mA) (x1)
- Hook and loop tape (x1)
- Owners Manual (x1)

4. Installation

A. WiFli™ Remote and Mounting Cradle

The WiFli™ remote provides access to many of the basic and advanced features of the WiFli™ explained in Section 5.

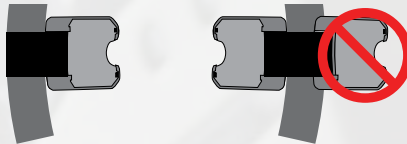
Battery installation: Before using the WiFli™ remote, install the supplied battery (CR2025) as illustrated.



Mounting options:

1-Dashboard: A strip of hook and loop tape has been provided if dash mounting of the WiFli™ remote is desired. Use the supplied alcohol prep. pad to clean the surface of the chosen mounting location for the remote. Allow surface to dry thoroughly before applying the hook and loop tape to ensure best performance.

2-Steering Wheel Mounting: The WiFli™ mounting cradle is designed to fit snugly to your steering wheel for safe and convenient access. Using the supplied attaching strap, tighten the mounting cradle to the steering wheel. The mounting cradle can be installed on either the left or right side of the steering wheel.

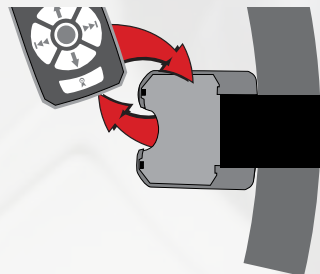


Caution!

The WiFli™ mounting cradle gives you quick access to WiFli™ remote while keeping both hands on the wheel. It is designed to be attached to the inside of the steering wheel perimeter. Position the cradle in an open space so as not to interfere with the deployment of the airbag or other steering wheel operations. Improper installation may lead to injury in the event of airbag deployment.

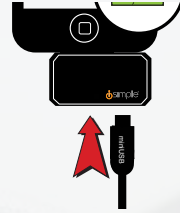
Removing WiFli™ Remote from the Mounting Cradle:

To remove the WiFli™ remote from the mounting cradle, push upwards gently on the remote by placing your finger inside the recess on the side of the mounting cradle.



B. WiFli™ Car Charger

To increase play time of your WiFli™, connect it to your vehicle's lighter port using the WiFli™ car charger. When connected, the WiFli™ car charger also charges the connected iPod or iPhone.



Caution!

The WiFli™ car charger utilizes a mini USB connection to provide battery charging to an iPod or iPhone docked to the WiFli™. Because the car charger has only been tested for use with the WiFli™, iSimple® recommends it not be used to charge other portable media devices. iSimple claims no responsibility for damages resulting from use of the car charger with devices other than the WiFli™.

C. WiFli™ App (iPhone & iPod touch only)



To use the WiFli™ with an iPod touch or iPhone, you will first need to download and install the free WiFli™ App from the iTunes App Store.

1. Connect the WiFli™ node to the docking port on your iPod touch or iPhone; a message should appear indicating that the WiFli™ App is not yet installed.
2. You will then see a message prompting you to install the WiFli™ app; click “YES”.
3. The device will take you to the WiFli™ app page at the iTunes App Store.
4. Download and install the WiFli™ app for FREE.

NOTE:

An internet connection is required to access the iTunes App Store. Check with your wireless carrier regarding any data usage fees.

No application is required for the iPod classic, iPod nano or other iPod models featuring a click wheel.

5. Operation

A. Operating from Device

1. iPhone / iPod touch

- a. Connect the WiFli™ node into the docking port on the bottom of the iPhone / iPod touch
- b. Click on the WiFli™ application to run it (this requires the installation of the WiFli™ app – see section 4 for installation details).
- c. Tune your radio to the frequency displayed by the WiFli™ app.

Note:

When running the WiFli™ app you may see a message that reads “Waiting for WiFli™.” If this occurs, please disconnect, then reconnect the WiFli™ to the device and wait 10 seconds. The message will automatically disappear when the WiFli™ is detected.



Automatic dTECT scan:

Press **dTECT scan** button to activate *dTECT™* Technology.

When activated, the *dTECT™* smart scanning technology will search the FM band and find the clearest local frequency for playback of your iPhone / iPod touch.

Tune radio to displayed frequency.

Manual Tuning:

For best performance, be sure to select a frequency that is not currently receiving a strong broadcast station and has little or no hiss.

Use the touch screen interface to tune to the desired frequency for playback.

NOTE: Press the *i* button to enter the info/settings menu if required.

2. iPod Models Featuring Click Wheel

NOTE: Use of this product on click wheel iPod models requires download of the *P.E.T.S. Playlist* from www.isimplesolutions.com/wifi/PETS

NOTE: *dTECT scan* function is not available on radios without RDS when using clickwheel iPods

For iPod models that don't use apps, we've created the Playlist Enabled Tuning System (PETS). This system uses Playlist style format that allows you to manually choose the perfect radio channel to play your iPod.

- a. Download the P.E.T.S. playlist from www.isimplesolutions.com/wifi/PETS
- b. Load the P.E.T.S. playlist into your iTunes Music Library.
- c. Sync your iPod with iTunes and ensure that the P.E.T.S. playlist is on your iPod.
- d. Connect the WiFi node into the docking port on the bottom of the iPod.
- e. Using the tuning knob or buttons on your radio, find a frequency that is not receiving any kind of broadcast (music or talk show). Try to find one with little or no hiss (static).
- f. Using your click wheel, access your "Playlists"
- g. Click on the WiFi "P.E.T.S." Playlist
- h. Inside this playlist there will be many "Channels/Songs" listed. Each with a different frequency. These are used to select the channel that the WiFi will use to transmit your iPod music.
- i. Select the "Channels/Songs" in the P.E.T.S. playlist that matches the frequency displayed on your radio. The iPod screen will flash briefly while the WiFi changes its broadcasting frequency. You will see then see the P.E.T.S. playlist again.
- j. Now press MENU on the iPod click wheel, to get back to your music.
- k. Make your music selection, it will broadcast through your radio.

B. Operating from the WiFli™ Remote

1. Basic Mode (non-RDS radios)

Note:

Basic mode is intended for use with radios that do not support Radio Data System (RDS) broadcasting. RDS is a special radio format that embeds small amounts of digital information in a FM signal, allowing the display information such as the name or tagline of the station playing, or "now playing" information. RDS capable home or car stereos can typically be identified by a small "RDS", "RBDS", "EON", "PS" or "RT" on the radio display window.



Press ►►| to skip to the next song.

Hold ►►| to fast forward.

Press |◄◄ to skip to the previous song.

Hold |◄◄ to rewind.

Press ►|| to play / pause

2. Advanced Mode (RDS radios only)

Note:

Advanced Mode is intended for use with radios that are equipped with stereos that support Radio Data System (RDS) broadcasting. RDS is a special radio format that embeds small amounts of digital information in a FM signal, allowing the display information such as the name or tagline of the station playing, or "now playing" information. RDS capable home or car stereos can typically be identified by a small "RDS", "RBDS", "EON", "PS" or "RT" on the radio display window.

RDS broadcasting allows the WiFli™ to send additional information to a FM radio. Because of this, you will be able to see title, artist and album information from the iPod / iPhone displayed on the radio.

- a. Press and hold the **MENU** button on the WiFli™ remote for 2 seconds.

Note:

The iPod / iPhone will show **Accessory Attached** on the display.

- b. PL: List will appear on the radio display; this indicates you are in Playlist Search mode.
- c. Press the ►►| or |◄◄ on the WiFli™ remote to switch to:

AR: Artist Search mode

AL: Album Search mode

GE: Genre Search mode

TR: Track Search mode

CO: Composer Search mode

- d. Press the ↓ to select.

Note:

Pressing the ↓ button is like using the center click button on the iPod.

- e. Use the ►►| and |◄◄ on the remote to change the displayed option, press the ↓ to select the displayed option.


f. Continue using the ►► and ◀◀ and ↓ until you have selected a song and it is playing. You should hear this song playing through your radio.

Press the ↑ to go back one step in the browsing menu (this is like pressing MENU on the iPod).

To begin browsing again, press the ↑ 4 times to return to the top of the browse menu. Complete steps c, d, e, and f to select the desired song.

Press and hold the **MENU** button on the remote for 2 seconds to leave the browse menu. Now you can use the ►► and ◀◀ to skip to the next track, or previous track.

If your audio playback is not clear (there is static / hiss) you may use the *dTECT*™ auto scan feature to find a clear signal for use with the WiFi.

Press  to activate the *dTECT*™ technology feature.

Note:

dTECT is a smart FM frequency auto scanning technology developed by iSimple that makes it easier than ever to find a clear, clean channel on which to play an iPod or iPhone. When the *dTECT* feature is activated, the WiFi™ will automatically locate and lock-on to the best local FM frequency for iPod or iPhone playback. All you need to do is tune your radio to the matching frequency.

Issue	Resolution
My iPod / iPhone shows "waiting for WiFi™"	Disconnect WiFi™ node from iPod / iPhone. Reconnect WiFi™ node into the docking port on the iPod / iPhone
iPod / iPhone shows "Accessory Connected" and I can't manually control my iPod / iPhone	Press the MENU button on the WiFi™ remote for 2 seconds; iPod / iPhone will switch back to Basic Mode allowing use of the click wheel or touch screen.
No iPod text displayed on my radio.	Verify the radio supports RDS; verify that the radio is tuned to the correct frequency
Lots of static or background noise	Run (or re-run) <i>dTECT</i> feature or use manual tuning to find a clear frequency

6. Troubleshooting

7. Warranty

Warranty One Year Limited Warranty

The quality controls used in the manufacture of this product will ensure your satisfaction. This warranty applies only to the original purchaser of this product from an authorized iSimple® dealer. This warranty covers any supplied or manufactured parts of this product that, upon inspection by iSimple® authorized personnel, is found to have failed in normal use due to defects in material or workmanship. This warranty does not apply to installation expenses. Attempting to service or modify this unit, operating this unit under conditions other than the recommended voltage will render this WARRANTY VOID.

Unless otherwise prescribed by law, iSimple® shall not be liable for any personal injury, property damage and or any incidental or consequential damages of any kind (including water damage) resulting from malfunctions, defects, misuse, improper installation or alteration of this product. All parts of this iSimple® product are guaranteed for a period of 1 year as follows:

Within the first 12 months from date of purchase, subject to the conditions above, iSimple® will repair or replace the product at our discretion, if it is defective in material or workmanship providing it is returned to an Authorized iSimple™ dealer, with PROOF OF PURCHASE from an authorized iSimple® dealer.

Warning: This equipment may be reset by unintentional electrostatic discharge during operation. Exposure to direct sunlight or extreme heat may cause damage or malfunction.

FCC

Caution: Changes or modifications not expressly approved by the party responsible for compliance could void the user's authority to operate the equipment.

FCC Compliance Statement:

1: This device is verified to comply with Part 15 of the FCC Rules. Operation subject to the following two conditions: (1) this device may not cause harmful interference, and (2) this device must accept any interference received, including interference that may cause undesired operation.

2: This equipment has been tested and found to comply with the limits for a Class B digital device, pursuant to Part 15 of the FCC Rules. These limits are designed to provide reasonable protection against harmful interference in a residential installation. This equipment generates uses and can radiate radio frequency energy and, if not installed and used in accordance with the instructions, may cause harmful interference to radio communications. However, there is no guarantee that interference will not occur in a particular installation. If this equipment does cause harmful interference to radio or television reception, which can be determined by turning the equipment off and on, the user is encouraged to try to correct the interference by one or more of the following measures:

- Reorient or relocate the receiving antenna.
- Increase the separation between the equipment and receiver.
- Connect the equipment into an outlet on a circuit different from that to which the receiver is connected.
- Consult the dealer or an experienced radio/TV technician for help.

"Made for iPod" means that an electronic accessory has been designed to connect specifically to iPod and has been certified by the developer to meet Apple performance standards.

Apple is not responsible for the operation of this device or its compliance with safety and regulatory standards.

"Works with iPhone" means that an electronic accessory has been designed to connect specifically to iPhone and has been certified by the developer to meet Apple performance standards.

Apple is not responsible for the operation of this device or its compliance with safety and regulatory standards.

iPod is a trademark of Apple Inc., registered in the U.S. and other countries. iPhone is a trademark of Apple Inc.



CANCEL
ACCEL/RES
COAST/SET



www.isimplesolutions.com



**For Best Performance Have It
Professionally Installed.**



Powered by
CEA